

CHETWOOD

INVESTMENT MANAGEMENT

**TAILORED DECUMULATION
PORTFOLIOS**

QUARTER 1 2026 REPORT



Quarter Insights

- Markets were dominated by geopolitical developments, most notably the US-Israel military action against Iran and the subsequent response. The escalation materially increased global uncertainty and weighed heavily on risk assets toward quarter-end.
- Earlier in the period, a US-led operation resulted in the removal of Venezuelan President Maduro, adding to geopolitical volatility.
- Oil prices surged to their highest level since 2022 following the closure of the Strait of Hormuz, fuelling renewed inflation fears and prompting investors to reassess the outlook for interest rates.
- The US Supreme Court ruled against the use of the International Economic Emergency Powers Act to justify the “reciprocal” tariffs announced in 2025. The US administration responded by implementing a flat 10% tariff on all imports.
- UK equities proved relatively resilient. The FTSE 100 passed the 10,000 level for the first time.
- In contrast, US mega-cap technology stocks underperformed as investors questioned the scale, timing, and returns of rapidly rising AI-related capital expenditure.

Market Review

The first quarter of 2026 was eventful for markets. Global equities began the year on a positive footing, supported by economic growth indicators that surprised to the upside and inflation readings that remained moderate. Sentiment, however, deteriorated sharply toward the end of the quarter as geopolitical tensions escalated following a US-Israel military campaign against Iran and the subsequent response. The closure of the Strait of Hormuz, a critical artery for global energy supply, drove a sharp rise in oil prices and weighed on risk assets into March.

Geopolitical risks were elevated throughout the period. Early in the quarter, markets were unsettled by a US-led operation that resulted in the removal of Venezuelan President Maduro, alongside renewed threats from President Trump to impose tariffs on certain European countries over opposition to his Greenland proposals. These tensions eased temporarily following meetings between President Trump and NATO leaders at Davos, where a broad framework for future cooperation was outlined.

Rising energy prices shifted market focus toward inflation risks rather than slowing growth.

Equities and bonds sold off globally as investors reassessed the path of monetary policy and unwound several popular pre-conflict trades.

Risk-sensitive assets weakened, while the US dollar strengthened amid a broader flight to safety.

For a second consecutive quarter, US equities underperformed markets outside the US, extending a trend seen through much of 2025. US technology stocks in particular had a challenging start to the year. Despite strong fourth-quarter earnings, investors increasingly scrutinised whether rising AI-related capital expenditure could deliver sufficient returns and whether new AI capabilities might disrupt the software as a service (SaaS) model. The early quarter rotation away from mega-cap technology supported global value stocks, which rose 3.2%, while growth stocks fell 5.6%.

Emerging markets were supported earlier in the quarter by positive AI sentiment, particularly for the companies that benefit in Taiwan and Korea. Later, risk-off conditions and Asia's high exposure to energy imports weighed on performance. Nevertheless, emerging markets outperformed developed markets, helped by strength in Latin America linked to higher energy prices.

Japanese equities benefited from yen weakness and a decisive election victory for the ruling Liberal Democratic Party, reinforcing expectations for growth-supportive policy. European equities ex UK fell amid higher gas prices and increased geopolitical uncertainty. UK equities proved resilient. The FTSE All Share rose 2.4%, supported by its commodity exposure and a weaker sterling.

In fixed income, government bond markets were volatile as higher energy prices fuelled inflation concerns. UK gilts were among the weakest performers, as the energy shock left the UK particularly vulnerable, given its reliance on natural gas.

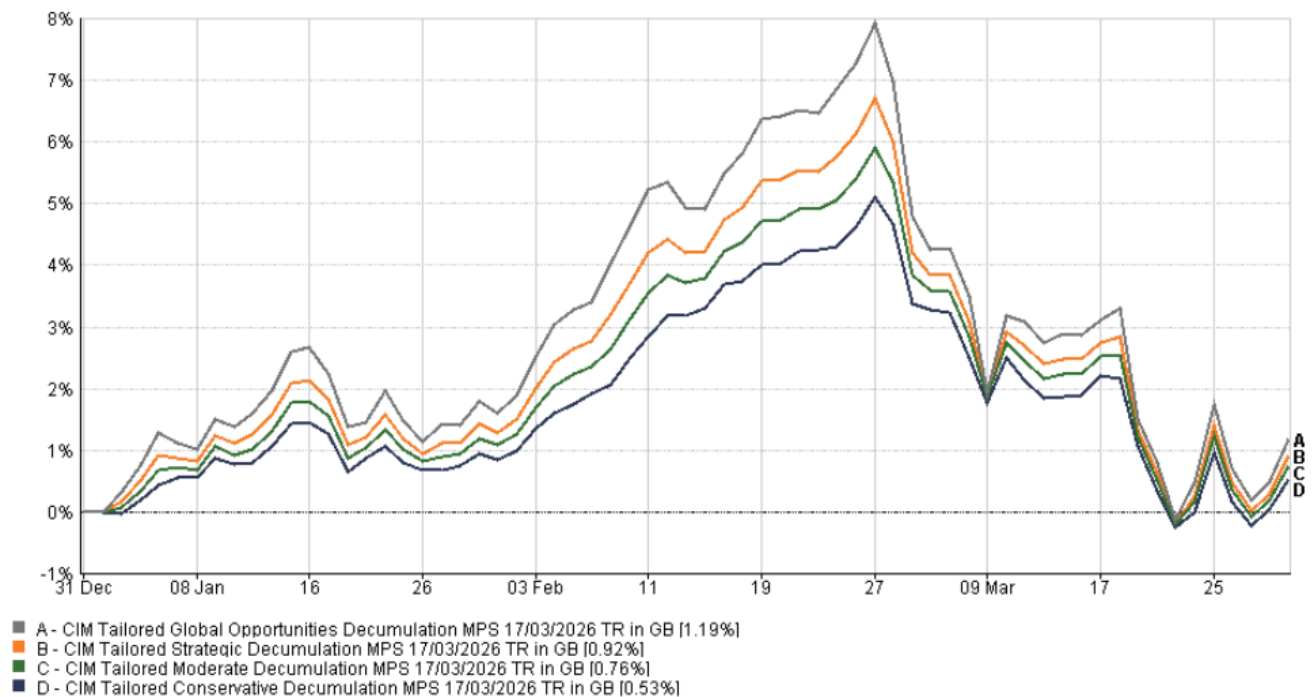
Portfolios performance

Portfolio / Comparator	3 months
CIM Tailored MPS Conservative Decumulation	0.53%
ARC Sterling Cautious PCI	-0.34%
CIM Tailored MPS Moderate Decumulation	0.76%
ARC Sterling Balanced Asset PCI	-0.50%
CIM Tailored MPS Strategic Decumulation	0.92%
ARC Sterling Steady Growth PCI	-0.65%
CIM Tailored MPS Global Decumulation Opportunities	1.19%
ARC Sterling Equity Risk PCI	-0.91%

Index Returns ¹	3 months
UK Equities	3.41%
UK Government Bonds (Gilts)	-1.87%
All Country World Equities	-1.23%
Pacific Equities (ex Japan)	4.96%
Emerging Market Equities	1.78%
US Equities	-1.54%
UK Headline Inflation	0.43%

Past performance is not a reliable indicator of future performance; and the value of investments, as well as the income from them can go down as well as up, and investors may get back less than the original amount invested.

Performance graph



31/12/2025 - 31/03/2026 Data from FE fundinfo2026

Key Funds and Trades over the Quarter

Top 3 Model Funds	3 months
Invesco FTSE EM High Dividend Low Volatility ETF	10.52% ▲
L&G Global Infrastructure Index	10.27% ▲
First Trust Nasdaq Clean Edge Smart Grid Infrastructure ETF	6.59% ▲

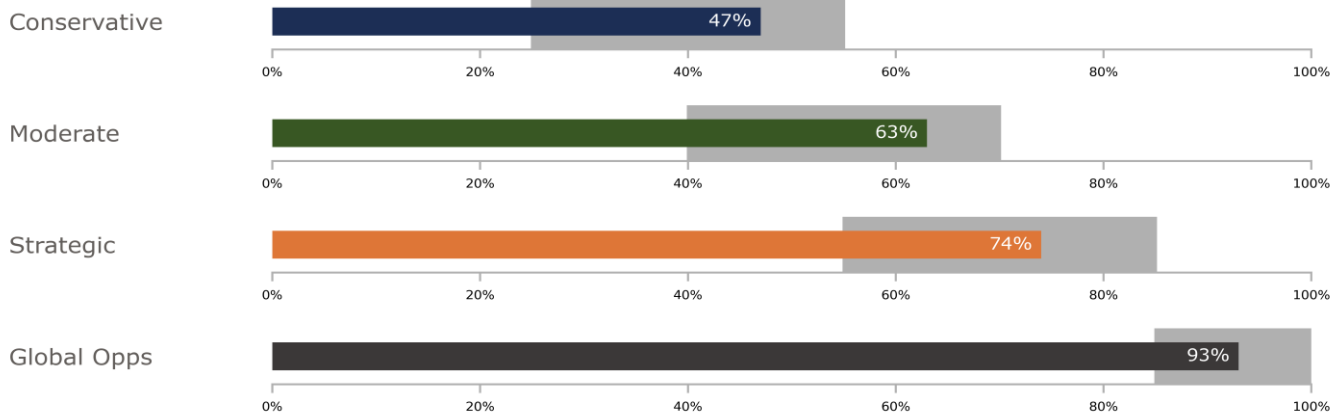
Bottom 3 Model Funds	3 months
iShares S&P 500 Financials Sector ETF	-7.63% ▼
HSBC MSCI China ETF	-7.15% ▼
Schroder US Equity Income Maximiser	-4.99% ▼

Source FE Analytics to 31st March 2026

Key fund	Commentary
L&G Global Infrastructure Index	This fund passively tracks the FTSE Global Core Infrastructure Index, giving diversified exposure to assets such as toll roads, utilities, power generation, and real estate, many of which have inflation-linked revenues. The fund gained 10% over the quarter, helped by expectations of rising inflation due to higher energy prices. We continue to believe the holding offers an attractive combination of income, inflation protection and portfolio diversification.
iShares EURO Total Market Growth Large ETF	Toward the end of the quarter, we introduced this holding, funded by the sale of the SPDR MSCI Europe Consumer Staples ETF. The consumer staples fund had enjoyed a strong period of relative performance earlier in the quarter, as heightened geopolitical uncertainty increased demand for defensive assets. As markets fell and valuations across Europe became more attractive, we took the opportunity to rotate away from this defensive positioning. The iShares fund provides broad exposure to European growth companies across sectors such as technology, industrials and consumer discretionary, allowing us to reposition portfolios toward areas with stronger medium-term growth potential.
SPDR Euro Dividend Aristocrats ETF	This ETF tracks high-quality eurozone companies with long records of paying and sustaining dividends. It strongly outperformed broader European equity indices over the quarter, benefiting from its tilt toward defensive, cash-generative businesses and sectors such as utilities, industrials and financials. In a volatile environment, the fund's quality and income characteristics proved supportive to returns.
Amundi Global Treasury Bond ETF	This passively managed fund was introduced to the portfolio towards the end of 2025 to provide pure exposure to government bonds, reducing corporate credit risk at a time when credit spreads appeared tight. The allocation proved helpful during the quarter, as widening credit spreads following events in Iran weighed on corporate bonds, while sovereign debt was more resilient.

Asset class review

Equity Exposure



Conservative

Ten largest fund holdings (%)

SPDR Bloomberg 15+ Year Gilt	9.3%
M&G Emerging Market Bond	7.6%
TM Gravis UK Infrastructure Income	7.0%
Amundi Global Treasury Bond	6.4%
Invesco UK Gilt 1-5 Year ETF	5.8%
Schroder UK Equity Income Maximiser	5.5%
Vanguard Global Credit Bond Inst Hedged	5.1%
Schroder US Equity Income Maximiser	5.0%
JPM Glb HY Corp Bond Multi-Factor Hdged	4.9%
Amundi IS Prime Japan ETF	4.7%
Assets in top ten holdings	61.3%

Ten largest asset class exposures (%)

Government Bonds	21.6%
North American Equities	13.1%
European Equities	12.0%
Other Alternatives	11.6%
Asia Pacific ex Japan Equities	8.5%
Emerging Market Bonds	7.6%
UK Equities	6.3%
Japan Equities	5.2%
Corporate Bonds	5.1%
High Yield Bonds	4.9%

Moderate

Ten largest fund holdings (%)

Schroder UK Equity Income Maximiser	7.3%
Schroder US Equity Income Maximiser	6.7%
Amundi IS Prime Japan ETF	6.3%
M&G Emerging Market Bond	5.9%
TM Gravis UK Infrastructure Income	5.8%
iShares EURO Total Market Growth Large ETF	5.3%
SPDR S&P Euro Dividend Aristocrats ETF	5.2%
Invesco FTSE EM High Dividend Low Volatility ETF	5.2%
SPDR Bloomberg 15+ Year Gilt	5.0%
iShares S&P 500 Financials Sector ETF	4.8%
Assets in top ten holdings	57.5%

Ten largest asset class exposures (%)

North American Equities	17.6%
European Equities	16.1%
Government Bonds	11.6%
Asia Pacific ex Japan Equities	11.4%
Other Alternatives	9.6%
UK Equities	8.4%
Japan Equities	7.0%
Emerging Market Bonds	5.9%
Corporate Bonds	4.0%
High Yield Bonds	3.8%

Asset class review

Strategic

Ten largest fund holdings (%)

Schroder UK Equity Income Maximiser	8.7%
Schroder US Equity Income Maximiser	7.9%
Amundi IS Prime Japan ETF	7.5%
iShares EURO Total Market Growth Large ETF	6.3%
SPDR S&P Euro Dividend Aristocrats ETF	6.2%
Invesco FTSE EM High Dividend Low Volatility ETF	6.1%
iShares S&P 500 Financials Sector ETF	5.7%
Federated Hermes Asia ex-Japan Equity	5.4%
FT Clean Edge Smart Grid Infrastructure ETF	5.1%
iShares MSCI Europe Industrials Sector ETF	4.4%
Assets in top ten holdings	63.3%

Ten largest asset class exposures (%)

North American Equities	20.8%
European Equities	19.0%
Asia Pacific ex Japan Equities	13.5%
UK Equities	10.0%
Other Alternatives	8.4%
Japan Equities	8.3%
Government Bonds	6.4%
Emerging Market Bonds	3.6%
Emerging Market Equities	3.2%
Corporate Bonds	2.5%

Global Opps

Ten largest fund holdings (%)

Schroder UK Equity Income Maximiser	10.9%
Schroder US Equity Income Maximiser	9.9%
Amundi IS Prime Japan ETF	9.4%
JPM Global Equity Premium Income	8.9%
iShares EURO Total Market Growth Large ETF	7.8%
SPDR S&P Euro Dividend Aristocrats ETF	7.7%
Invesco FTSE EM High Dividend Low Volatility ETF	7.7%
iShares S&P 500 Financials Sector ETF	7.1%
Federated Hermes Asia ex-Japan Equity	6.8%
FT Clean Edge Smart Grid Infrastructure ETF	6.4%
Assets in top ten holdings	82.6%

Ten largest asset class exposures (%)

North American Equities	26.1%
European Equities	23.8%
Asia Pacific ex Japan Equities	16.9%
UK Equities	12.5%
Japan Equities	10.4%
Other Alternatives	4.4%
Emerging Market Equities	3.9%
Cash	2.0%

Asset Class	Portfolio Views
Fixed Interest	Despite the potential for increasing inflation, we hold a broadly positive view on government bonds due to the relatively high yields and attractive income profile, with a focus on attractively priced UK assets. We deem corporate bonds a little less attractive due to current tight credit spreads.
UK Equities	We remain constructive on UK equities, supported by rising dividends, share buybacks, and increased M&A activity. Despite strong performance in 2025 and the first quarter of 2026, valuations remain relatively attractive, especially for small and mid-sized companies.
US Equity	We are constructive on US equities, supported by resilient economic activity, strong corporate balance sheets, and robust earnings growth. Recent reporting seasons have reinforced the view that US companies continue to deliver solid profit momentum, aided by productivity gains and supportive fiscal conditions.
Japan Equity	Japanese equities remain attractive, although no longer objectively 'cheap' following a period of strong performance. They are supported by pro-growth government policy, corporate reforms, and improving capital efficiency. Significant fiscal stimulus and continued buybacks should support earnings growth.
Asia and Emerging Market Equity	We remain positive on Asia and emerging market equities, supported by attractive valuations and improving fundamentals. While sensitivity to commodity prices and geopolitical risks remains a consideration, exposure to long-term structural themes such as semiconductors and AI infrastructure supports the outlook.
Alternatives	We view alternative investments as valuable diversifiers, particularly as traditional fixed income will face headwinds in a higher inflation environment. We currently favour liquid strategies managed by experienced teams, as well as infrastructure investments that offer some inflation protection.

Outlook

Looking ahead to the second quarter, the key development for markets remains the situation in the Middle East and its impact on energy prices. At quarter-end, the Strait of Hormuz remained closed, with negotiations ongoing. Our view is that further progress toward a resolution would likely ease oil prices and reduce inflation pressures, giving the US Federal Reserve and other central banks greater flexibility on interest-rate policy. Conversely, a prolonged disruption would allow higher energy costs to feed more fully into the economy, potentially weighing on consumer spending and business investment while keeping inflation elevated.

The relationship between oil prices, inflation, and central-bank policy was the defining theme of the quarter and remains central to the outlook. Higher energy prices drove a sharp shift in interest-rate expectations, and upcoming US inflation data for April and May will be the first to fully reflect the recent rise in fuel costs. While headline inflation is likely to move back above 3% across developed economies, this would still be modest by the standards of 2022.

Importantly, market indicators suggest longer-term inflation expectations remain well anchored, suggesting limited risk of second-round effects for now.

Market weakness during the quarter has been driven primarily by uncertainty rather than by a deterioration in fundamentals. Corporate earnings expectations remain positive, and profit margins are still healthy. The sell-off has largely reflected positioning and sentiment, with investors reducing exposure to previous market leaders amid heightened volatility. History suggests that geopolitical shocks often follow a similar pattern: an initial decline, a period of stabilisation, and then recovery as uncertainty clears.

While the outlook remains highly uncertain, our base case is for some degree of de-escalation, given the strong political and economic incentives on all sides to limit the duration of the conflict.

That said, investors must be prepared for continued volatility.

Diversification remains critical, particularly against both upside inflation risks and downside growth risks.

Periods like this can be uncomfortable, but they are not unusual in long-term investing. Staying disciplined, diversified, and focused on long-term objectives remains the most effective response to short-term uncertainty.

Thoughts for the quarter ahead...



- Developments in the Middle East will remain the dominant near-term market driver. The duration of disruption to oil supply, particularly via the Strait of Hormuz, will shape inflation and policy outcomes.
- Upcoming US and UK inflation releases will be closely watched, as they will reflect the full impact of higher energy prices and influence interest-rate expectations.
- Markets are also focused on the US Senate vote to ratify Kevin Warsh as the next Federal Reserve Chair. Despite a historically hawkish record, expectations lean toward a more accommodative approach if conditions allow.
- We believe recent market weakness reflects uncertainty and positioning rather than a deterioration in fundamentals, with earnings growth expectations and profit margins remaining broadly supportive.
- We will scrutinise Q1 earnings for evidence that higher energy costs are feeding through to margins, with particular focus on US hyperscalers and returns on AI-related capex.
- Recent performance has reinforced the value of diversification. We remain focused on prudent risk management while selectively positioning portfolios to capture opportunities.

Important information

Chetwood Investment Management Limited is authorised and regulated by the Financial Conduct Authority. Our regulation details are set out in the FCA register: Firm Reference No: 835233 www.fca.org.uk/register. Registered in England and Wales: 11810284. Registered office: St Denys House, 22 East Hill, St. Austell, Cornwall, United Kingdom, PL25 4TR.

This publication is for informational purposes only. The opinions expressed are based on current market conditions and are subject to change. The information provided does not constitute investment advice and it should not be relied on as such. It should not be considered a solicitation to buy or an offer to sell a security.

Any information herein is given in good faith, but is subject to change without notice and may not be accurate and complete for your purposes. This document is not intended for distribution to, or use by, any individual or entities in any jurisdiction where such distribution would be contrary to the laws of that jurisdiction or subject Chetwood Investment Management Limited to any registration requirements.

Risk factors should be taken into account and understood including (but not limited to) currency movements, market risk, liquidity risk, concentration risk, inflation risk, performance risk, local market risk and credit risk.

Investors should be aware that past performance is not an indication of future performance, the value of investments and the income derived from them may fluctuate and you may not receive back the amount you originally invested.

¹ For the comparative index returns, we have used the total return performances of the following ETF's:

Comparative index	ETF Name
UK Equities	ISHARES CORE FTSE 100
US Equities	ISHARES CORE S&P 500
European Equities (ex UK)	ISHARES MSCI EUROPE EX-UK
Emerging Market Equities	ISHARES CORE EM IMI ACC
Japanese Equities	ISHARES CORE MSCI JAPAN
Pacific Equities (ex Japan)	ISHARES CORE MSCI PACIF X-JP
UK Government Bonds (Gilts)	ISHARES CORE UK GILTS
Global Bonds (GBP hedged)	ISHARES CORE GLB AGG GBP-H D
Commodities	ISH DIVERS COMMOD SWAP ETF